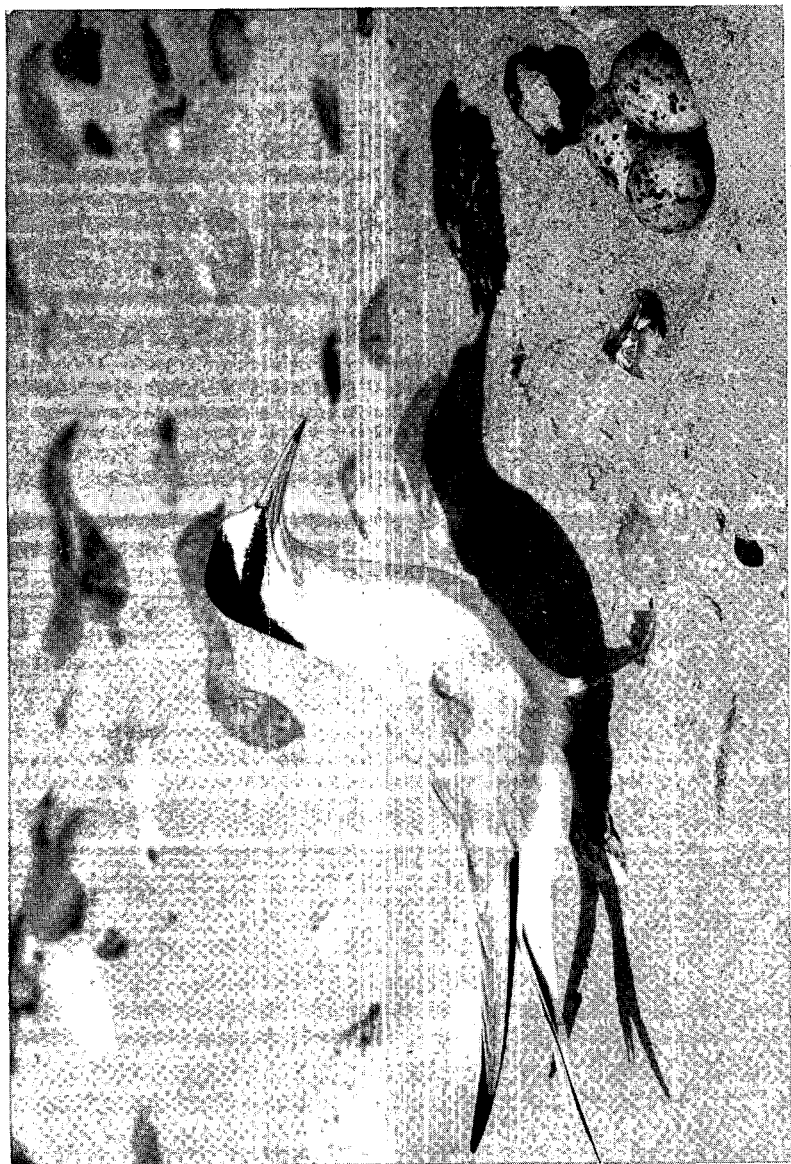




[Photo by Douglas Galey

VII — Little Owl at its nesting-hole in England. These small owls are less nocturnal than other species of owl, often calling and hunting by day and even deliberately seeking a place in the sun for basking.



[Photo by Douglas Galey

VIII — Little Tern (*Sterna albifrons*) at nest in England. Small terns in freshly moulted plumage, with identical head and beak markings, are seen in New Zealand in March and April (v. p. 91).