



BIRDS

NEW ZEALAND

Te Kāhui Mātai Manu o Aotearoa

MARLBOROUGH

November 2022

- Maud Island Report
- Muzzle Station Report
- Atlas Progress
- Birding Highlights
- Wader Count
- Upcoming Events



MAUD ISLAND/TE PĀKEKA



The Maud Island/Te Pākeka team October 2022

In early October we ran a four-day trip to Maud Island/Te Pākeka to check up on the fluttering shearwater colony out on the peninsula. We managed to check all 116 artificial burrows a couple of times and also do some burrow maintenance around the colony. Possibly still quite early into the breeding season for the fluttering shearwaters with only four birds (all on eggs) found in the burrows.

In addition to the burrow checks, we carried out 5 Minute Bird Counts at 30 spots around the ring road and also did more general exploring of the island. We helped out the rangers by clearing the vegetation across three slips on the island tracks following damage from the flooding events in August.

The weather was fine for the most part of the trip although we did unfortunately pick the windiest day of the lot to do the five-minute bird counts!

The highlight of the trip for all of the younger ones was getting the opportunity to hold a fluttering shearwater but seeing rifleman, falcon, Maud Island frogs, giant weta, cave weta, flax weevil and endless numbers of geckos also ranked highly. Trips have been going to the island for a number of years now to try encourage younger people to be involved with Birds NZ by having them develop their interest in birds and the outdoors.



A flax weevil found at night time on Maud Island/Te Pākeka

© Pat Crowe

Pictured is a flax weevil found at night time on Maud Island/Te Pākeka. This species is extremely prone to predation by rats and mice but generally thrives in their absence. As such it acts as a good ecosystem health indicator species for the island.

Thank you to Kristin Ruwhiu for organising all the food (we were very well fed) and to Toni Bell for support. Also a big thank you to the Maud Island Rangers Nick and Gen and their two kids Theo and Georgie for their kaitiakitanga of Maud Island/Te Pākeka.

There will be a day trip scheduled for January to revisit the colony and band all the fluttering shearwater chicks prior to fledging.



Group photo at the summit © Pat Crowe

MUZZLE STATION

Over Labour weekend, a small group of Atlasers drove up and over the hills to Muzzle Station to raise Atlas effort across this very under-surveyed area. Pat had organised the logistics for the group consulting with the station owners for permission.





The team covered some rugged terrain, often walking up rivers, along ridges, and making the most of 4WD tracks where possible. We were blown away by the number of riroriro/grey warbler in places that seemed like marginal habitat. Pat had set a challenge for the weekend with a bottle of wine up for grabs to the person who detected the highest number of the elusive Chukar.



Overall the team gathered 327 complete checklists, covering 11 grid squares with over 78 hours worth of effort put across the area over 4 days. The biggest value was through splitting up to rapidly increase effort, and cover more ground. People were dropped off at various points to return to vehicles or pick-up points, and helped gather an impressive amount of data over such a short period of time.

You can view the eBird Trip report via this link
<https://ebird.org/atlasnz/tripreport/79330>



October 2022

Pat Crowe, Sam Ray, Mike Bell, Rowan Hindmarsh-Walls, Mats Olsthoorn, Sharen Graham, Christine Grove, Toni Bell, Jazz Bell, Tui Bell, and Dan Burgin.

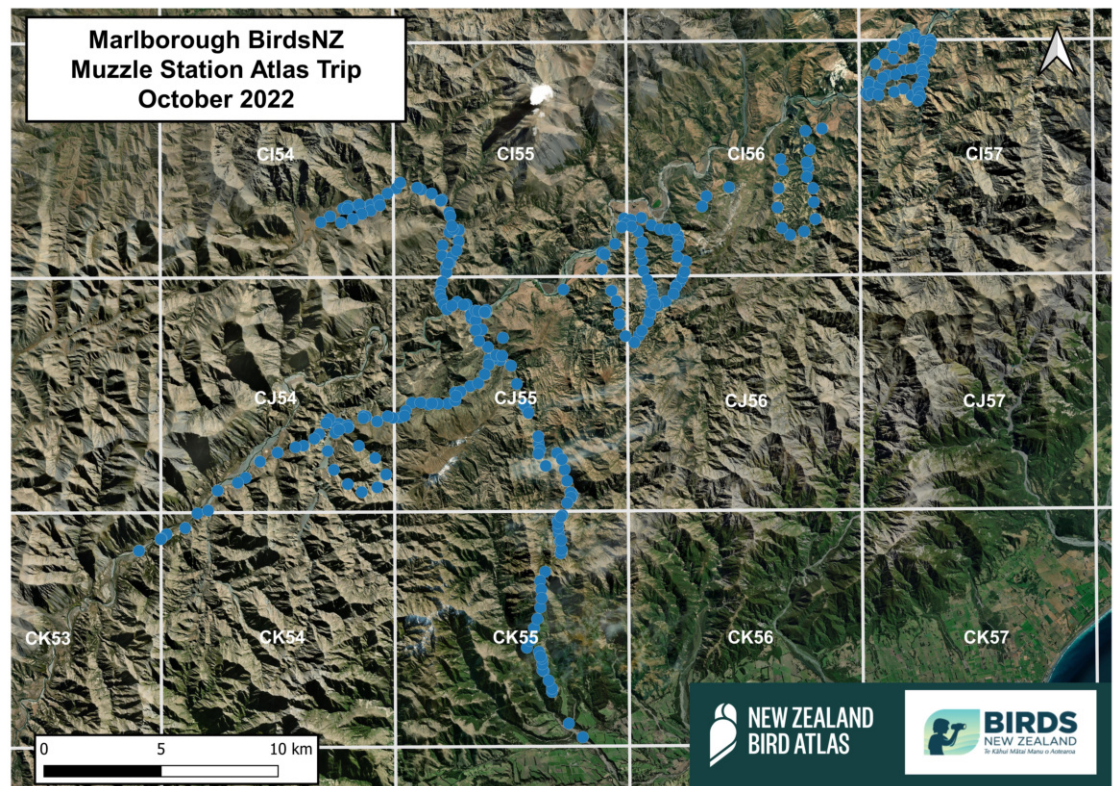


Amongst the 44 species detected on the entire trip, 16 Chukar were recorded by various members of the team. This has helped provide valuable information for this game bird species in a historically under-surveyed area. We all enjoyed the wine in the end with no single winner for the challenge announced!

Thanks to all of the group who gave up their Labour Weekend to assist with this Atlasing expedition, it was a blast. Thanks also to the Muzzle Station owners for their permission to Atlas across their property. Finally thanks to Pat for organising such a fantastic trip - we look forward to more in the future!



**Marlborough BirdsNZ
Muzzle Station Atlas Trip
October 2022**





NEW ZEALAND BIRD ATLAS

MARLBOROUGH

There is still plenty of Atlasing to be done in Marlborough this Summer season. If you can help us increase our nocturnal effort, and increase the number of grid squares with data for the season, we'd be immensely grateful! Maybe venture beyond the usual spots for a change, you may well find a new favourite birding spot in the process.

Use the maps included in the newsletter to help you target those undersurveyed areas, or indeed use the Atlas Effort Map on the portal. Key stats are below for the upcoming Summer Season:



88.97% (121/136) Grid Squares with data



4070 Checklists



>1150 Diurnal effort hours



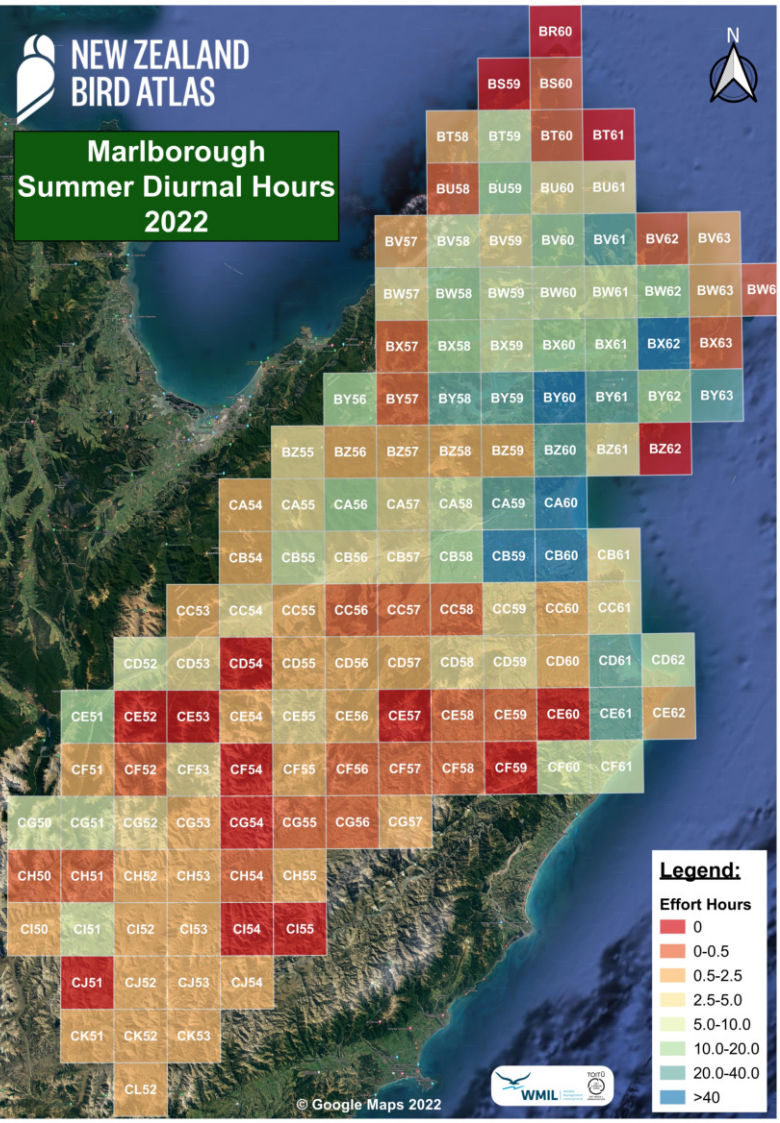
27.5 Nocturnal effort hours



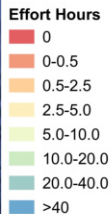
124 Species detected



**Marlborough
Summer Diurnal Hours
2022**

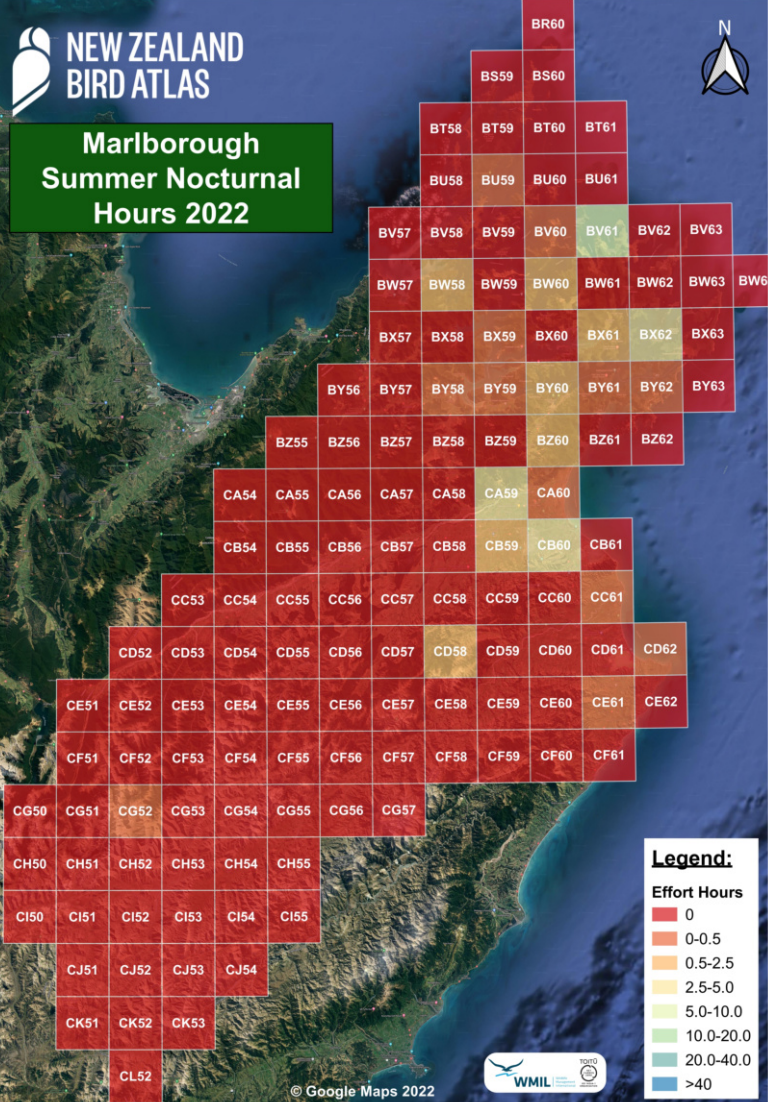


Legend:





**Marlborough
Summer Nocturnal
Hours 2022**



Legend:

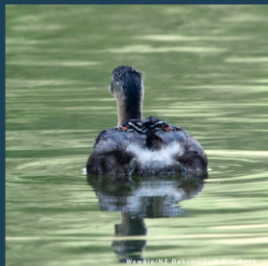
Effort Hours

- 0
- 0-0.5
- 0.5-2.5
- 2.5-5.0
- 5.0-10.0
- 10.0-20.0
- 20.0-40.0
- >40



BIRDING HIGHLIGHTS

A wee summary of the birding highlights from the past two months - feel free to send in your highlights to Pat or Dan to feature!



Bill Cash regularly reports on the local birdlife, and has been monitoring the wewela/NZ Dabchick at Taylor Dam, photographing their recent successful broods of chicks up there.



Bill Cash had a blinder of a morning on Friday 25th November, finding a red-necked phalarope at Grovetown Lagoons. This is a rare vagrant species from North America, with a distinct method of feeding by pirouetting and creating a little whirlpool. This was one of the key ID features Bill used to distinguish this from other species. Many of us have since been able to go and look at this fantastic rare species since and a UBR will be submitted. Great spotting Bill!

WADER COUNT

November 2022



Sam and Daleece identifying a huahou/red knot. © Dan Burgin

Pat, Hunter, Sam, Deleece and Dan undertook the wader counts on the 26th November at Lake Grassmere. Conditions weren't amazing, but still a great day out surveying for waders as part of the national counts. Kākīānau/black swan and karoro/black-backed gull were in high numbers, but so were pohowera/banded dotterel and with chicks too which is encouraging. Kuaka/bar-tailed godwits, kuriri/Pacific golden-plover and a single huahou/red knot were also seen, as well as taranui/Caspian tern, tētē-moroiti/grey teal, poaka/pied stilt and kuruwhengi/Australasian shoveler.

All counts were uploaded as part of complete checklists to the NZ Bird Atlas portal to help support the growing Atlas dataset.



Pohowera/banded dotterel © Dan Burgin

UPCOMING EVENTS

Mark your calendars for the following:

- **Boons Valley 18 December 2022**
Atlasing in the valley
- **January 2023 (Date TBC)**
Fluttering Shearwater Chick Banding
- **25 - 26 February 2023**
Wairau River Harrier Banding Weekend

